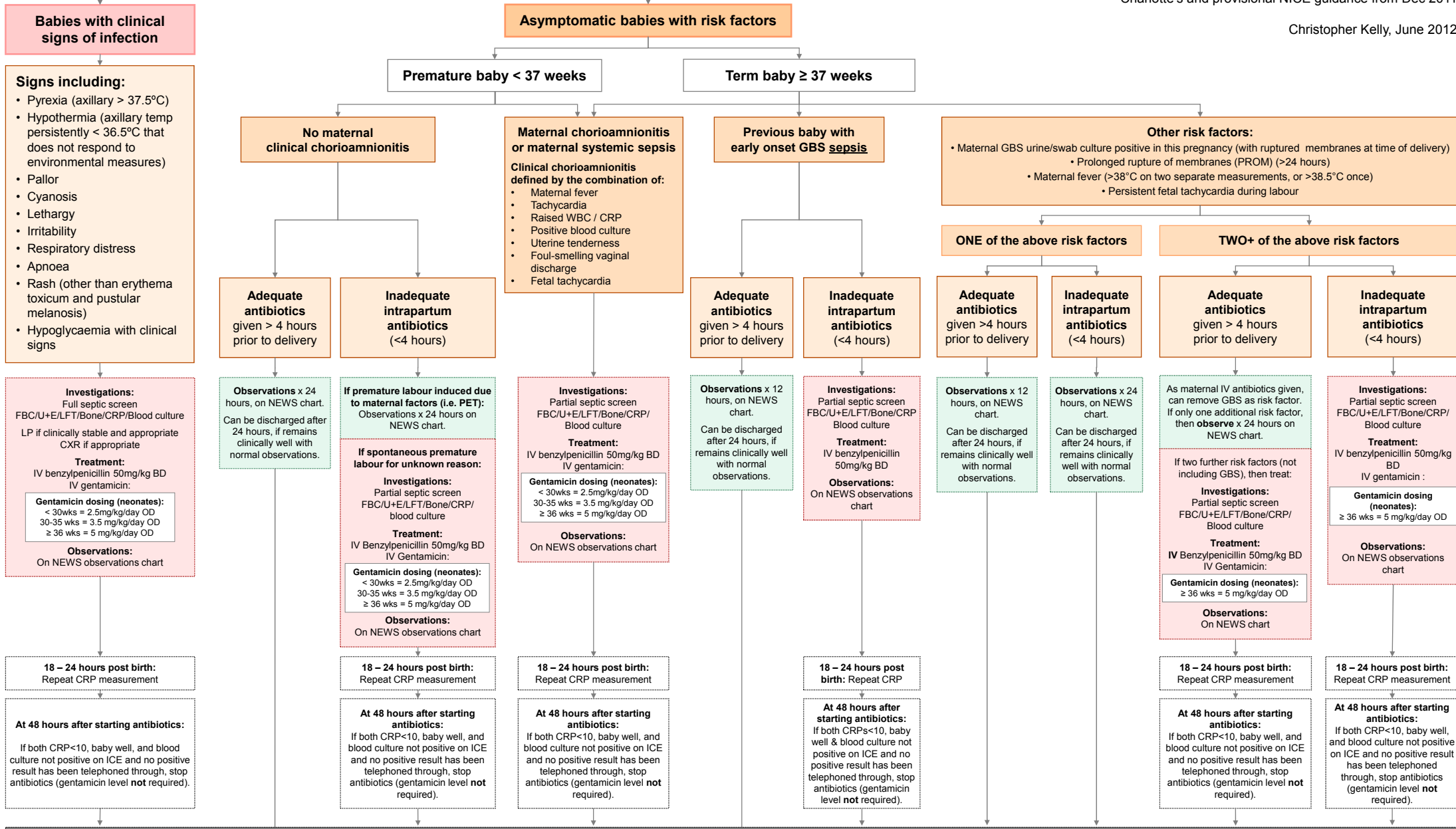


# Draft Neonatal Sepsis Guideline

Created from an amalgamation of seven NICU guidelines from: University College London, Whittington, St Thomas', St George's, King's College, Queen Charlotte's and provisional NICE guidance from Dec 2011

Christopher Kelly, June 2012

**Start here**



**If any CRP > 10, blood culture positive or child remains clinically unwell, contact senior Paediatrician for advice.**

The CRP should ideally be repeated 18-24 hours after the first CRP, but can be repeated up to 36hrs later. For all babies who have been at risk of infection, neonatal sepsis advice card to be given to parents at time of discharge home.